



EXCEL GROUP OF COMPANIES

PREQUALIFICATION DOCUMENT

WELCOME TO EXCEL GROUP

EXCEL Group of Companies is founded on the philosophy of Quality, Innovation and Leadership.

For more than 40 years, our Group of Companies is driven by passion, dedication, innovation and continuous improvement. We offer a wide range of products catering to the Construction, Oil & Gas, Waste Management, and Aviation Industries.

An ISO 9001: 2015 quality & EN: 1090-1:2009 certified organization, we provide complete solutions under one roof with the State of Art Facilities, Infrastructure, and Machinery supported by well trained staff, technicians and project managers.

Our prime goal is to deliver the most efficient, cost effective products and services without compromising on quality to the satisfaction of the ever demanding requirements of Clients and Consultants.



CONTENTS

1. Group Profile	
1.1 Introduction	Page 4
1.2 Chairman's Message	Page 5
1.3 Mission	Page 6
1.4 Organization Chart	Page 7
1.5 Trade License & VAT Registration	Pages 8-10
2. Product Line	Pages 11-24
3. Technical Services	Page 25
4. Design and Engineering	Page 26-27
5. Manufacturing Production Facilities	
5.1 Factory Photos	Page 28-31
5.2 Machineries	Page 32-39
5.3 Areas for Factories	Page 40
5.4 Factory Photos	Pages 41-43
6. Quality Assurance & Quality Control	Pages 44-45
7. Health, Safety & Environment	Pages 46-47
8. Accreditation & Certificate	Pages 48-51
9. Projects References	Pages 52-55
10. Projects Gallery	Pages 56-59
11. Contact Us	Page 60



INTRODUCTION

Excel Group is a privately owned, multi-disciplinary engineering and manufacturing company headquartered in Ajman, UAE. Since 1981, Excel has developed experienced design, engineering, and manufacturing teams with a proven track record of collaborating with clients around the world.

Excel Group is an ISO 9001:2015 accredited group. We employ precise production processes, meticulous quality standards and control at all stages of design, engineering and manufacturing. We have extensive in-house manufacturing capabilities at our three plants that supplement our ability to build cost-effective products with short lead times.

Our highly skilled workforce and capital intensive investments, which include three facilities, several rolling mills and galvanizing plants, enable us to deliver diverse product offerings. We cater to industries such as civil construction, oil and gas, aviation, and waste management.

Excel has successfully delivered several high profile, turn-key projects for clients in Europe, the Middle East, and in Northern Africa.

CORE SERVICES

EXCEL employs a team of highly qualified and motivated professionals who are well supported by the Company's advanced manufacturing and engineering facilities.

ENGINEERING

The Company's Engineering facilities provide comprehensive Design & Drafting services supported by a product development section which is constantly enhancing quality and product efficiencies. EXCEL's design capabilities include Design and Engineering for all major disciplines, utilizing 3D CAD & Tekla.

MANUFACTURING

EXCEL Group is a specialist manufacturer offering a wide range of services through its facilities.

The Group is fully equipped with all essential infrastructure and sophisticated machinery – in house including CNC Cut and Drill Line for Plates and Beams, Laser Cutting Machine, Band saw machines, Turret Punching Machine, Plate Bending machine, Shot Blasting Booth, Galvanizing



CHAIRMAN'S MESSAGE

Since 1981, Excel Group of Companies is a leading provider of engineering and contracting services for the past four decades in the region.

My vision has always been to excel at quality, cost-effectiveness and exceeding customer expectations. Our product and service capabilities are underpinned by our ability to provide engineering expertise, effective project management and supportive customer service. Offering services spanning a wide range of engineering fields in oil & gas, waste management, marine structures, building constructions, roads & bridges and industrial and civil infrastructure, Excel Group of Companies is the preferred choice of clients in the Gulf region because of its reliability and commitment to quality and safety.

As we approach EXPO 2020, Excel Group has gone through extensive transformation to capitalize on the new opportunities and potential that lie ahead. We have heavily invested in state of art machinery and technology and undergone rigorous qualifications to the EN Standard to become a formidable force in the industry. Our goal continues to be remained to strive and excel to create enormous value for our customers, stakeholders and the economy



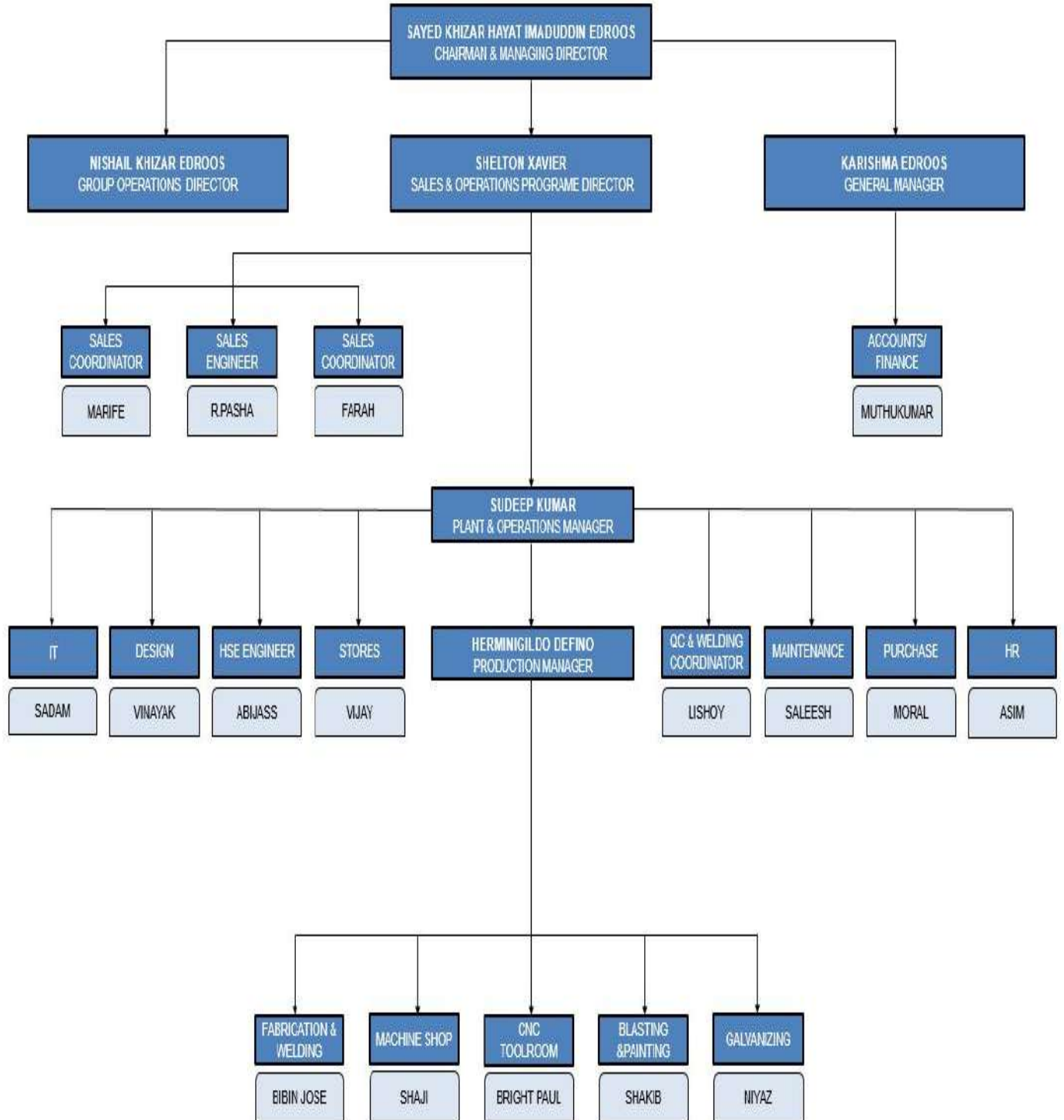
MISSION

To offer innovative & effective solutions to challenging projects in the Scaffolding & Formwork, Aviation & Ground Support Equipment, Galvanizing Services & Waste Management industries in the region.

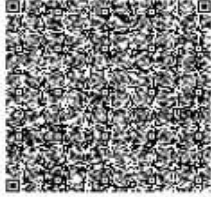
VISION

We aim to be the most trusted and efficient manufacturer by providing our customers the solution in all their needs. We will continue to accept any challenges that will benefits both Excel and our business partners.

ORGANIZATION CHART



TRADE LICENSE



Industrial License / رخصة صناعية

Regular License - رخصة عادية

License No. **26539** رقم الرخصة



ACC.No. 22996 رقم الفرفة

Register No. 16150 رقم السجل التجاري

License Details	Renew License / تجديد رخصة	تفاصيل الرخصة
Trade Name {EXCEL INDUSTRY CO. {L.L.C		الاسم التجاري: شركة اكسل الصناعية (ذ.م.م)
Legal Form Limited Liability Company		الشكل القانوني: شركة ذات مسؤولية محدودة
Expire Date 2023-08-29 تاريخ الانتهاء	Issue Date 1998-09-05 تاريخ الاصدار	

Passport / رقم الجواز	Nationality / الجنسية	Manager Name / اسم المدير
55804703	الهند India	سمير خضر ميلروس سيد خضر ميلروس SAMIR KHIZAR EDROOS SAYED KHIZAR EDROOS
23289757	الهند India	سيد خضر حيات معاد الدين ميلروس SAVED KHIZAR HAYAT IMADUDDIN

Activites	الانشطة
Steel Structures Manufacturing	صناعة الإنشادات المعدنية
Metal Industrial Frameworks Manufacturing	صناعة أطر صناعية من معادن
Retal sale of Scaffold	بيع السقالات - بالتجزئة
Scaffolds Renting	تأجير السقالات
Scaffold Installation Works	أعمال تركيب وفك السقالات

صناديق البريد P.O. Box	تاريخ انتهاء عقد الايجار Contract Expiry Date	اسم المؤجر / Lessor	العنوان / Address
1196	2022-08-31	Sayed Khizar Edroos	رقم 1، عمدان الصناعية 2 No. 1, Ajman Industrial2

ملاحظات

Emp No. رقم الموظف Voucher Date. 2022-07-19 تاريخ الايصال Voucher No. 30160618 رقم الايصال

Print Date 2022-07-19 تاريخ الطباعة

Approved electronic document issued without signature by the Department of Economic Development. To verify the license kindly visit www.ajmanded.ae وثيقة إلكترونية معتمدة وصادرة بدون توقيع من دائرة التنمية الاقتصادية - عجمان. لمراجعة صحة البيانات الواردة في الرخصة يرجى زيارة الموقع الإلكتروني www.ajmanded.ae

900 70 08-7032088 06-7032088 870 عجمان info@ajmanded.ae www.ajmanded.ae Ajmanded Ajmanded Ajmanded

TRADE LICENSE

GOVERNMENT OF SHARJAH
Economic Development Department



حكومة الشارقة
دائرة التنمية الاقتصادية

رخصة صناعية Industrial License



دليل الشارقة الصناعي
Sharjah Industrial Guide



تفاصيل الرخصة License Details

Issue Date	1983/11/14	تاريخ الإصدار	License No.	3588	رقم الرخصة
Expiry Date	2022/11/12	تاريخ الإنتهاء	Registration No.	28214	رقم السجل
Trade Name	EXCEL IND. CO .LTD. - L.L.C		شركة اكسيل الصناعية - ذ.م.م		الاسم التجاري
Legal status	Limited Liability Company		شركة ذات مسؤولية محدودة		النشغل القانوني

أطراف الرخصة License Members

الحصص	الصفة	رقم الهوية / الجواز	الجنسية	إسم المستثمر	رقم المستثمر
Shares	Type	ID/Passport No.	Nationality	Investor Name	Investor No.
%51	شريك	784195557549870	الإمارات	عبدالله سعيد حميد النعيمي	9398
%24	شريك	784197786374302	الهند	سمير خضر عيروس سيد خضر عيروس	33160
%25	شريك	784195050714732	الهند	سيد خضر حيات عمادالدين عيروس	33158

المدير: سمير خضر عيروس, سيد خضر حيات عمادالدين

أنشطة الرخصة: صناعة أطر صناعية من معادن صناعة الاشغال المعدنية للمباني

العنوان: المنطقة الوسطي-المليحة... خلف صناعيه مليحه الجديده - أرض مسورة رقم 1 ملك سلطان مصبح سعيد خصونى الكتيبي

رقم الهاتف المشترك: 0506316047
صندوق البريد: 19559 الشارقة
البريد الإلكتروني: Gx.abod.55@gmail.com



تاريخ الطباعة: 2021/11/16
رقم المستخدم: 39795

- This document is official. It doesn't need to be stamped or signed.
To view license details please visit SEDD web site: www.sedd.ae
- Distribution of flyers is strictly prohibited in public and residential areas.
Distribution is allowed through

- هذه الوثيقة رسمية ولا تحتاج لتم أو توقيع.
للتأكد من صحة البيانات يرجى زيارة موقع الوزارة: www.sedd.ae
- يمنع منعاً باتاً توزيع الاقلام في الأماكن العامة والأحياء السكنية. التوزيع فقط عن طريق الصحف، المحلات وصناديق البريد.

VAT REGISTRATION

الهيئة الاتحادية للضرائب
FEDERAL TAX AUTHORITY



شهادة تسجيل لضريبة القيمة المضافة في الامارات العربية المتحدة Certificate of Tax Group Registration in the United Arab Emirates

The Federal Tax Authority certifies the formation of the below Tax Group in the UAE تشهد الهيئة الاتحادية للضرائب أن الجهة التالية مسجلة لضريبة القيمة المضافة في الامارات العربية المتحدة

Tax Registration Number 100208521300003 رقم التسجيل الضريبي
Effective Registration Date 01/01/2018 تاريخ التسجيل الفعلي
Full Arabic legal name شركة اكسيل الصناعية ذ م م الاسم القانوني الكامل باللغة العربية
Full English legal name Excel Industry Co LLC الاسم القانوني الكامل باللغة الانجليزية
Registered address N/A العنوان المسجل

Other members of the Group

No.	Name (English)	Name (Arabic)
1	MARINE & ENGINEERING SUPPLIES CO. LLC	شركة التجهيزات البحرية والهندسية (ذ.م.م)
2	EXCEL IND. CO .LTD. - L.L.C	شركة اكسيل الصناعية - ذ.م.م
3	KHIZAR STEEL INDUSTRIES FZE	خضر لصناعات الاستيل م م ح
4	ARMSTRONG STEEL INDUSTRY FZC	ارمسترونغ لصناعات الاستيل ش م ح

First VAT return period 01 Jan 2018 - 31 Jan 2018 and monthly thereafter فترة أول إقرار لضريبة القيمة المضافة

First VAT return due date 28 Feb 2018 تاريخ استحقاق أول إقرار لضريبة القيمة المضافة

Start and end dates of Tax periods: Monthly

يرجى التأكد من صحة تفاصيل الشهادة. يجب إبلاغ الهيئة الاتحادية للضرائب في حال تغيير الأسس التي حصلت فيها على رقم التسجيل الضريبي الخاص بك.

Please ensure that the details on this certificate are correct. You must inform the Federal Tax Authority of any change on the basis of which you obtained your Tax Registration Number as a Tax Group.



Issuing Date: 13/05/2018

تاريخ الإصدار

PRODUCT LINE

STRUCTURE STEEL AND ARCHITECTURAL METALS CONTRACTING

We undertake a multitude of works within the field of Structural Steel, Non-structural Steel, Architecture and Sheet Metal works.

We are well equipped with State-of-art machinery to back up precision quality and fabrication, supported and supervised by highly trained staff at both design engineering, production and execution levels.

Our projects are managed by well qualified Project Management Head, supported by a team of well trained, qualified technicians, foreman, supervisors and engineers, to complete the project on time with excellent quality, adhering to the project specifications and to the satisfaction of Client/Consultant



PRODUCT LINE

A. STRUCTURAL STEEL & ARCHITECTURAL METALS CONTRACTING

1. Structural / Non Structural Steel
2. Mezzanine Floors
3. Canopies
4. Painted Handrails
5. Cat Walks
6. GI Gratings
7. MS Painted Bollards & Guard Rails
8. Aluminium / Mashrabias / Perforated Panels
9. Stainless Steel Balustrade / Cladding
10. Stainless Steel Handrails / Bollards

B. METAL SYSTEM FOR ELECTRO MECHANICAL & STORAGE SYSTEM

1. Cable Management System
2. AC Ducting System
3. Switch Gear Enclosure Cabinets
4. Racking Storage System

C. INDUSTRIAL FABRICATION

1. Oil / Gas Decking / Platforms
2. Skid Fabrication

D. ALUMINUM FABRICATION

1. Special Powder Coated Aluminum Vertical Louvers
2. Powder Coated Aluminum Handrails Near Water Fronts

E. WASTE MANAGEMENT

1. Trolley Bins
2. Double Skip Loader
3. Tipper Bodies for Construction Industries
4. Side Loading Compactor
5. Rear Loading Compactor
6. Open-Top Skip Container (Chain Type)
7. Open-Top Skip Container (Roll on/Roll off Type)

PRODUCT LINE

F. FORMWORK & SCAFFOLDING

1. Cuplock
2. Props
3. Steel boards
4. Alu Decking Panels
5. Steel Walers
6. 80 kN HDG Modular shoring
7. 10 kN Grade 50 soldiers legs and accessories
8. 100 kN Grade 50 soldiers legs

G. AVIATION DIVISION

1. Aircraft Washing Stair
2. Access Stair / Step
3. Scissor Lift Platform
4. Slave Pallet – Pallet Dolly
5. Side Loading Dolly – Pallet
6. Collapsible – Baggage Cart
7. Side Drop – Baggage Cart

H. MANUFACTURING OF MS PIPES / TUBES

I. TECHNICAL SERVICES

1. Hot Dip Galvanizing
2. Metal Coating / Painting
3. Sand Blasting and Painting
4. Laser Jet Cutting
5. Plasma Cutting
6. Powder Coating

STRUCTURAL STEEL & ARCHITECTURAL METALS CONTRACTING



STRUCTURAL STEEL



MEZZANINE FLOORS



CANOPIES



MS HANDRAILS



CAGE LADDERS / CAT WALKS

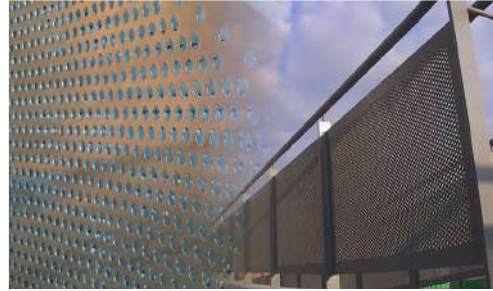


GI GRATINGS



MS PAINTED BOLLARDS & GUARD RAILS

STRUCTURAL STEEL & ARCHITECTURAL METALS **CONTRACTING**



ALUMINIUM / PERFORATED PANELS



MASHRABIAS



STAINLESS STEEL BALUSTRADE



STAINLESS STEEL HANDRAILS / BOLLARDS

PRODUCT LINE

ELECTRO MECHANICAL & STORAGE SYSTEM

We undertake Fabrication / Manufacturing of A/C ducting and Cable Tray System and also Switch Gear Enclosures & Cabinets.

We also manufacture components for racking and storage system for large warehouses.



AC DUCTING FABRICATION



MS / ALUMINUM RACKING/STORAGE SYSTEM

PRODUCT LINE

ELECTRO MECHANICAL / STORAGE RACKING SYSTEMS



CABLE MANAGEMENT SYSTEM



AC DUSTING SYSTEM



**SWITCH GEAR ENCLOSURES
CABINETS**



RACKING STORAGE SYSTEM

PRODUCT LINE

INDUSTRIAL FABRICATION



OIL / GAS DECKINGS / PLATFORMS



SKID FABRICATION

ALUMINUM FABRICATION



SPECIAL POWDER COATED
ALUMINUM VERTICAL
LOUVERS



POWDER COATED ALUMINUM
HANDRAILS NEAR WATER
FRONT

PRODUCT LINE

WASTE MANAGEMENT DIVISION

Delivering sustainable waste management solutions such as static and mobile waste compactors as well as rear load refuse compactors, bins, skip containers, mechanical sweepers, trailers and truck bodies in gulf region. Excel designs, manufactures and supplies Garbage Trolleys and Containers in various sizes and capacities that are suitable for the collection of industrial and household solid waste.

Excel has fabricated and assembled the illustrated Mobile Compactor(s) for a reputed clients like Beeah, Tadweer and Imdaad. The Mobile Compactor is a vehicle with fixed compacting equipment, comprised of a sturdy body of high tensile steel. It has a keel shaped floor, ejector barrier, ejector ram and hopper lift brackets, tailgate with packer, sweeper, hydraulics connected with hose, electrical fittings and a bin lifting mechanism. It can be supplied with additional bin lifting arms. The Mobile Compactor is compatible with most popular model of chassis.

Excel's Waste equipment Management Division produces:

- Skips of various size.
- Garbage Trolleys
- Sludge Handling Containers, for liquid and semi-liquid waste
- Mobile Compactors, with rear and side loading capabilities
- Street Sweepers
- Street Washer Tanks
- Bin Washers



PRODUCT LINE

WASTE MANAGEMENT SYSTEM



TROLLEY BINS



DOUBLE SKIP LOADER



TIPPER BODIES FOR CONSTRUCTION INDUSTRIES



SIDE LOADING COMPACTOR



REAR LOADING COMPACTOR



**OPEN-TOP SKIP CONTAINER
(CHAIN TYPE)**



**OPEN-TOP SKIP CONTAINER
(ROLL ON / ROLL OFF TYPE)**

PRODUCT LINE

FORMWORKS & SCAFFOLDINGS

Excel Group is a leading scaffolding and formwork manufacturer in the U.A.E (United Arab Emirates) .Our scaffolding and formwork products are used for every type of access and support structure in the building and construction industries, shipbuilding, offshore construction and industrial maintenance.

HIGHLIGHTS

- We design, manufacture and supply products ranging from simple shoring accessories to sophisticated formwork and panel systems
- Supported by a highly trained sales & design network using the latest computer-aided design technologies, Excel Group has had key involvement in high profile jobs of great complexity in the GCC region as well as internationally through our partnerships with RMD, Peri, SGB, Hunnebeck, and Titan Ischebeck.
- The highly trained workforce here at Excel, and extensive in-house manufacturing capabilities, is instrumental in guaranteeing high quality, cost-effective products with the shortest lead times
- We underpin our commitment to providing the highest level of on-site safety & productivity with a continuous programme of development to ensure meet the dynamic needs of a range of industries our project management teams have acquired a dearth of expertise working in close partnership with our customers to ensure their projects are completed to schedule and within budget.



PRODUCT LINE

AVIATION DIVISION

Excel Aviation has been working in collaboration with aircraft builders and airlines across the globe to develop the next generation of docking systems.

This wealth of expertise and practical experience is the basis for the versatile Excel Aviation access systems for various types of narrow and wide body aircraft.

Developed in collaboration with aircraft maintenance experts, these systems support safe and efficient maintenance work. The end result is mobile, multi-functional, multi-aircraft platforms that can be designated as either a nose-in or tail-in configuration in accordance with any hanger specifications.

Excel Aviation is committed to supply turn-key docking solutions while providing expert, comprehensive services that cover docking design, engineering, manufacturing, erection, and commissioning.





AIRCRAFT WASHING STAIR



ACCESS STAIR / STEP



SCISSOR LIFT PLATFORM



SLAVE PALLET - PALLET DOLLY



SIDE LOADING DOLLY - PALLET



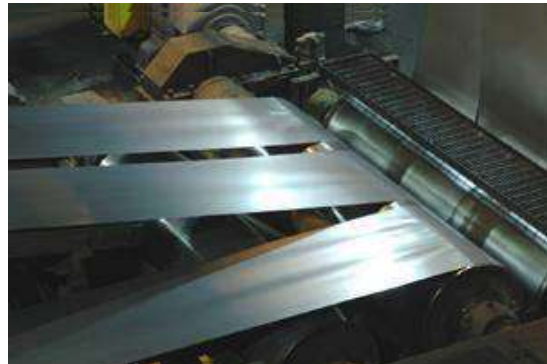
COLLAPSIBLE - BAGGAGE CART



SIDE DROP - BAGGAGE CART

PRODUCT LINE

MANUFACTURING OF MS PIPES / TUBES



TECHNICAL SERVICES

We at Excel Industries offer a wide and technical services which includes....



HOT DIP GALVANIZING



METAL COATING / PAINTING



SAND BLASTING AND PAINTING



LASER JET CUTTING



PLASMA CUTTING



POWDER COATING

DESIGN AND ENGINEERING

Excel Industry is well supported by highly qualified and experienced engineers from design and engineering Industry. Our Team uses latest software and quality procedures for smooth processing of technical information.

FABRICATION • WELDING • FINISHING

FABRICATION

Experienced design, engineering, manufacturing, and project management teams with a proven record of collaborating with clients world-wide to deliver custom built specification products and turn-key solutions. Experienced and qualified fabricators along with engineers ensures zero error tolerance in our processes and product deliverables.

WELDING

Welding and large-scale weldments are central to our fabrication process. Our welders are third party certified in MIG (GMAW) and Tungsten Inert Gas (TIG) welding. Our facilities are equipped with sophisticated fit-up structures as well as investments in high quality welding robots to maintain impeccable weld quality. Our robotic welding is also used on critical applications where components must be defect free. Our welding process is thoroughly monitored by our certified International Welding Engineer and Welder Procedure Specification (WPS) is in place to ensure the quality of weld meets standard specifications.



Our investment in the latest technology and training for our qualified machinists allow us to hold tight tolerances of .0005 on features as per client specifications on squareness, flatness and parallelism. We are furnished with a large range of high capacity CNC plasma cutting, water jet cutting, press break, bending, shearing, band saw, turning, milling, tapping, slotting and drilling machines. The entire process is executed by experienced engineers and monitored by trained. Quality inspectors. In addition, we are equipped with modern laser profile cutting, turret punching, CNC wire-cutting, lathe, milling, boring, threading, slotting, drilling and hacksaw machines with qualified technicians and machine operators.

INSTALLATION TEAM

Our projects are managed by well qualified project management team. Supported by a team of trained technicians, supervisors, engineers and workers to complete the project in time, adhering to the project specifications and meeting good quality and to the satisfaction of Consultants.

We have a dedicated installation team at site who are capable of executing jobs with quality, safety at given time frame.



MANUFACTURING / PRODUCTION FACILITIES & MACHINERIES

With extensive knowledge base developed over years, Excel Group of Companies has a high profile team of Design Engineers, Draftsmen and Quantity Surveyors, equipped to provide end to end design and engineering solutions irrespective of Engineering complexity involved. All design work is closely monitored, reviewed, crosschecked and verified to meet customer requirements. Design and drawing outputs are verified in compliance with Design code and regulatory requirements.

The high level of accuracy achieved, in terms of efficient Engineering and Quality driven fabrication, ensures zero error tolerance in our processes and product deliverables. Estimation and Design are carried out for Steel Structures using dedicated software packages to produce comprehensive designs that conform to clients' requirements, design codes and standards.

We are specialized in structural steel fabrication, stainless steel & aluminum fabrication. Our full service material processing with multiple burn tables means we can efficiently size raw material for production and cut plates to precise controlled dimensions. State of the art facilities with extensive in-house engineering and manufacturing capabilities that supplement our ability to develop cost-effective products with short lead times.











MACHINERIES

TUBE MILL AND SLITTING

Hot rolled steel coils are uncoiled, leveled and slit into strips before being fed into the forming mill for pipe forming and shaping then welded by high frequency induction welder.



PLATE PROCESSING

Trumpf Trulaser 3060 Laser Cutting / Marking Machine



SPECIFICATIONS

Working Range	6000mm x 2000mm x 15mm (MS), 12mm (SS), 6mm (AL)
Laser Power	3.2kw CO2 Laser

Dualine Water Jet and Plasma Cutting Machine

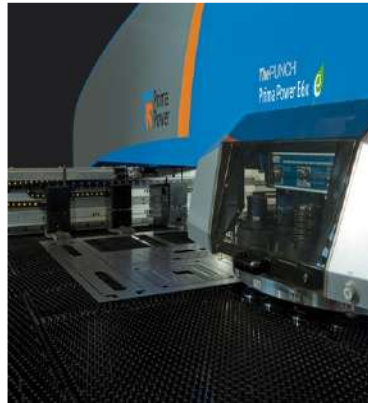


SPECIFICATIONS

Working Range

12000mm X 3000mm X150mm(Water jet)
12000mm X 3000mm X 35mm(Plasma)

Finn power E5x Turret Punching Machine



SPECIFICATIONS

Maximum Working Sheet Size

2530mm X 1270mm

Number of Tool Stations

20 Stations

Punching Speed

800bpm at 01mm pitch

Plasma Cutting Machines (Eckelmann, ESAB & Peddinghaus FDB1500)



SPECIFICATIONS

Working Range			
Eckelmann	ESAB ESP-200	Peddinghaus FDB 1500	ESAB Crossbow
10000mm X 4000mm X 70mm	12000mm X 2500mm X 20mm	6000mm X 1500mm X 25mm	3100mm X 1550mm X 20mm

MATERIAL PROCESSING

Press Brake- CNC (URSVIKEN 1600 TON & MENGELE 600 TON)



SPECIFICATIONS

URSVIKEN 1600 TON	MENGELE 600 TON
10000mm X 3mm , 5000mm X 30mm	7000mm X 8mm,

TRUMABEND C 120 & TRUBEND 5320



SPECIFICATIONS

Tonnage	120 Ton
Working length	3000mm

SPECIFICATIONS

Tonnage	120 Ton
Working length	3000mm

SPECIFICATIONS

Tonnage	320 Ton
Working length	3000mm

Mechanical and Hydraulic Press Machine



SPECIFICATIONS

Capacity	10 – 800 Ton
----------	--------------

SPECIFICATIONS

Capacity	100 – 300 Ton
----------	---------------

Press Brake Manual Machines



SPECIFICATIONS

Maximum Capacity	100 – 300 Ton
Bending Length	2000mm – 4100mm

Shearing Machines



SPECIFICATIONS

Cutting Width	3000mm – 4000mm
Thickness	01mm – 08mm
Back Gauge	300mm – 1000mm

Band Saw & Pipe Cutting Machines



SPECIFICATIONS	
Cutting Range	45 – 90 Degrees
Saw Blade Size	9300mm x 54mm x 1.6MM

SPECIFICATIONS	
Cutting Range	Dia up to 76mm X 4mm
RPM	32 - 76

TOOLING

CNC Milling Machines



SPECIFICATIONS	
Maximum Work piece	700mm x 350mm x 620mm
Spindle RPM	13000rpm
Axis	03

SPECIFICATIONS	
Maximum Work piece	1000mm x500mm x 620mm
Spindle RPM	12000rpm
Axis	03

SURFACE PREPARATION

Auto Blasting & Manual Blasting



Paint Booth



Powder Coating



Galvanizing / Electroplating



AREAS FOR FACTORIES

EXCEL INDUSTRY CO. LLC – AJMAN

Location: New Industrial Area, Ajman - UAE
 Facility: 32,500 square meters
 Fabrication Area: 20,000 square meters



Tool room machine,
 Shot blasting machine,
 Manual blasting,
 Painting bath, Tube
 mill & Slitting line,
 Water jet cutting,
 Plasma cutting, Hot
 dip Galvanizing &
 Electroplating

KHIZAR STEEL INDUSTRY – SHARJAH HFZA

Location: Hamriyah Free Zone, Sharjah – UAE
 Facility: 53,000 square meters
 Fabrication Area: 35,000 square meters



CNC plate processing line,
 Beam cutting & drilling
 line, Laser cutting
 machine 2x6 mtrs., CNC
 workshop, Cutting &
 bending machine, Turrett
 punching machine, Angle
 punching line, Tool room
 machine, Powder coating
 line, Shot blasting
 machine, Manual
 blasting, Painting bath,
 Tube mill & Slitting line,
 Cut to length line,
 Fabrication shop,

FACTORY PHOTOS



FACTORY PHOTOS



QUALITY ASSURANCE AND QUALITY CONTROL

QUALITY ASSURANCE

Excel's Quality Management System (QMS) operates in accordance with ISO 9001: 2015.

The Management of Excel is committed to:

- Continuous improvement of the QMS by ensuring risks and opportunities that affect the quality or consistency of products and services are determined and addressed.
- Satisfying requirements by ensuring that customer, statutory and regulatory requirements are determined, understood and consistently met.
- Continuous improvement of the QMS to enhance customer satisfaction, while the focus on enhancing customer satisfaction is maintained.

Excel has a full-fledged, fully operational Quality Control Department. All procedures are documented and reviewed at regular intervals. Any required revisions are carried out as necessary. An issue that could affect the quality or consistency of any products or services are promptly addressed.

Excel's QC Department is well connected with renowned testing laboratories in UAE to carryout Destructive and Non-Destructive testing.

QUALITY POLICY

Excel Group Company is committed to the task of implementing an effective Quality System, which confirms to Customer & Product Requirements on continual improvements and thus achieve leadership in the market as a reputed and reliable supplier.

To achieve this goal excel shall continuously pursue these objectives.

- 📌 Satisfy the Customer Requirements / Expectations.
- 📌 Providing consistent Quality product on time.
- 📌 Providing additional resources for improving the Manufacturing facilities.
- 📌 Provides a framework for establishing and reviewing quality objectives, and its commitment to comply with regulatory requirements.
- 📌 Continual improvement on Quality Management System, Products and Process.

Excel Group Company will consistently implement, and regularly review and improve its Quality Management System to ensure meeting the Quality commitment always.

A handwritten signature in black ink, appearing to read "S. K. S. D. S.", is written above the printed name.

Chairman

Dated: 11.07.2015

HEALTHY • SAFETY • ENVIRONMENT

ENVIRONMENTAL POLICY

	EXCEL INDUSTRY GROUP	Doc No.	IMS Policy 01
	<i>Quality , Environment, Occupational Health and Safety Policy</i>	Rev	1
		Date	08/07/2022
		Pages	1

IMS Policy Statement

We at EXCEL INDUSTRY GROUP shall develop and implement an Integrated Management System to ensure the following

- Provide our customers with our products with outstanding quality, consistent with customer requirements and regulatory requirements WITH THE AIM OF FULL CUSTOMER SATISFACTION.
- FULL COMMITMENT OF ALL EMPLOYEES TO THE IMPLEMENTATION OF THE INTEGRATED MANAGEMENT SYSTEM.
- Protect our employees, the community and the environment from any adverse impact on health, safety and environment arising from our activities.
- This Policy shall be communicated to all persons working under the control of our organization
- This policy shall be periodically reviewed to ensure that it remains relevant and appropriate to our organization

We are committed to the following

1. Providing customer satisfaction through outstanding quality, consistent with customers' requirements.
2. Providing and maintaining an adequate safe work environment for our employee, contractors and visitors.
3. Avoid undue risk to human health and adverse impact to environment
4. Prevention of injury and ill health
5. Prevention of air, water and land pollution
6. To comply with and satisfy legal requirements in areas of operation
7. Continual improvement of the IMS,
8. Ensure the availability of information and necessary resources to achieve our objectives and targets;
9. Measure the achievements of the continual improvement by setting up and monitoring objectives and targets for our IMS performance indicators

Our IMS shall be documented, implemented and maintained as per the requirements of ISO 9001:2015, ISO 14001:2015 and OHSAS 45001: 2018

This Policy shall be communicated to all persons working under the control of the organization

This policy shall be made available to interested parties; and

This policy shall be reviewed periodically to ensure that it remains relevant and appropriate to the organization.



Chairman & Managing Director
Date 08/01/2022

HEALTHY • SAFETY • ENVIRONMENT

HEALTH AND SAFETY POLICY

Doc: HSE MS-001 Issue: 1 Rev: 0 Date: 08 -01-2022	EXCEL INDUSTRY GROUP HEALTH, SAFETY AND ENVIRONMENT MANAGEMENT POLICY	 Page 2 of 34
--	--	---

HEALTH SAFETY AND ENVIRONMENT POLICY STATEMENT OF INTENT AND POLICY OBJECTIVES

EXCEL considers the environment, health, safety and welfare of its employees and visitors to be of paramount importance, and that a safe and healthy working environment is a prerequisite to achieving the Excel stated goal to promote safety and wellbeing of our employees.

It is company policy that accident prevention be a prime concern of all employees. This includes the safety and wellbeing of our employees, subcontractors, and customers, as well as the prevention of wasteful, inefficient operations, and damage to property and equipment.

Through the implementation of the Health and Safety policy, the Chairman & Managing Director is committed to achieving the following objectives:

- To provide, as far as reasonably practicable, a safe and healthy working environment, safe premises and facilities for all employees and visitors;
- Disseminate awareness of Health, Safety & Environment among all employees, visitors & Subcontractors.
- Minimize the impact to environment through pollution prevention, reduction and recycling of waste reducing emissions from any operations under the company's control
- Promote a safe work environment by providing appropriate training, matching the capabilities of personnel to the task to be carried out and providing correct tools for the work to proceed in a safe and efficient manner.
- Investigate all the accident and incidents objectively and thoroughly so as to prevent recurrence.
- To ensure that staff have access to appropriate training and development to enable them to discharge competently the responsibilities assigned to them;
- To have an effective system for communicating and consulting on health and safety matters, and securing the co-operation of employees in implementing the Health and Safety Policy;
- Compliance with all statutory regulations.

EXCEL will review this policy on annual basis, taking account of any changes in the legislation and our organisation, and other factors.



 Karishma Edroos
 Deputy General Manager



 Sayed Khizar Hayat Imaduddin Edroos
 Chairman & Managing Director

ACCREDITATION AND CERTIFICATION

ISO 9001 : 2015 Certificate of Quality Management International LLC
Excel Industry Co. L.L.C.



Certificate of Registration



The Management System of
Excel Industry Co. L.L.C
 Plot 52/1, New Industrial Area, P.O Box: 1196, Ajman, UAE

has been audited and found to be in compliance with the requirements of

ISO 9001:2015 Quality Management System

For the Scope

Design, Manufacturing & Supply of Scaffolding & Framework Systems,
 Black & Galvanized Electric Resistance Welded (ERW) Pipes and Tubes,
 Waste Compaction / Tipping Units, Galvanizing and Painting,
 Plasma Cutting and General Mechanical Services.

Certificate No	:	C175
IAF/NACE	:	17,19,24,2,25,11,25,61, 25,62,27,52
Original Date	:	03.08.2008
Previous Expiry Date	:	02.08.2020
RC Audit End Date	:	26.10.2020
Current Date	:	04.11.2020
Expiry Date*	:	02.08.2023



*This Certificate is Valid Subject to completion of Annual Audits in time.




Brian Dawes
 General Manager

The certificate may be rendered invalid if there is any lack of fulfilment of conditions set out in the VQMI Rules of Certification

Registration Address: #801, Cayan Business Centre, Barsha Heights, Dubai (UAE)

Tel: 00971 4 2441313 Fax: 00971 4 5646037 Email: velosiam@applusvelosi.com Web: www.applusvqmi.com

ACCREDITATION AND CERTIFICATION

ISO 9001: 2015 - Certificate for Quality Management International LLC
Khizar Steel Industries FZE

Certificate of Registration

Applus⁺
VQMI

The Management System of
Khizar Steel Industries FZE
Plot 2F-06 & 07, Hamriyah Free Zone, P.O Box: 42636, Sharjah, UAE

has been audited and found to be in compliance with the requirements of

ISO 9001:2015 Quality Management System

For the Scope

Design, Manufacture, Service & Supply of Aviation Docking Solutions and Ground Support Equipment, Structural Steel Fabrications, Truck Body Fabrications, Waste Compaction/ Tipping Units, Black & Galvanized Electric Resistance Welded (ERW) Pipes and Tubes, Scaffold & Formwork Solutions, Plasma & Laser Cutting, Forging, Galvanizing and Powder Coating.

Certificate No	: C174
IAF/NACE	: 17,18,19/24,20,25.11,25.61, 25.62,27.52,28.22,28.99
Original Date	: 03.08.2014
Previous Expiry Date	: 02.08.2020
RC Audit End Date	: 26.10.2020
Current Date	: 04.11.2020
Expiry Date*	: 02.06.2023

*This Certificate is Valid Subject to completion of Annual Audits in time.



eiACI
مركز الإمارات العالمي للتحقق
Emirates International Accreditation Centre
CB-039-QMS

Applus⁺
VQMI



Brian Dawes
General Manager

The certificate may be rendered invalid if there is any lack of fulfilment of conditions set out in the VQMI Rules of Certification
Registration Address: #801, Cayan Business Centre, Barsha Heights, Dubai (UAE)
Tel: 00971 4 2441313 Fax: 00971 4 5646037 Email: velosiqm@applusvelosi.com, Web: www.applusvqmi.com

ACCREDITATION AND CERTIFICATION

ICV CERTIFICATE – EXCEL INDUSTRY CO. LLC



IN-COUNTRY VALUE CERTIFICATE

Certificate ID: 112005
Issue Date: 19.09.2021
Valid Until: 20.05.2022

{EXCEL INDUSTRY CO. {L.L.C

31.94%

Company General Information

License No.: 26539
Company Type: SME in UAE
Financial Year End Date: 31.12.2020
Company based in: Within UAE
Company Business: GOOD MANUFACTURER

For Cases of Re-Certification

Re-Certification (*) No.:

Reason for this Re-Certification



Signed By
On behalf of Supplier

Name:
SAMIR KHIZAR EDROOS SAYED KHIZAR EDROOS

Designation:
DIRECTOR

Verified as per ICV Agreed Upon Procedures (AUP)
On behalf of Certification Body

Name:
Peeyush Joardar

Designation:
Partner

Electronically signed by
Peeyush Joardar

Company:
MBC Auditing & Accounting

Certificate Issued Based on ICV Version: 3.0

ACCREDITATION AND CERTIFICATION

ISO 3834-2:2005 – Certificate of Conformity Khizar Steel Industries FZE

DNV·GL

CERTIFICATE OF CONFORMITY

Certificate No:
10000331638-PA-RvA-ARE Rev. 0.0

Initial date:
2019-12-12

Validity:
2019-12-12 - 2024-12-12

This is to certify that the welding operations and associated activities which influence the integrity of welds of:

Khizar Steel Industries FZE

P O Box 42636, Hamriyah Free Zone, Phase 1, Sharjah, United Arab Emirates

has been found to conform to the Quality requirements for fusion welding of metallic materials in the standard:

ISO 3834-2:2005

This certificate is valid for the following Scope:

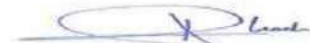
Fusion welding of metallic materials for structural and Piping Products and Components.

For a description of the welding activities see Appendix accompanying this Certificate.

Place and date:
Barendrecht, 2019-12-12



For the issuing office:
DNV GL – Business Assurance
Zwloseweg 1, 2994 LB Barendrecht,
The Netherlands, +31 10 2922 689



D.P. Koek
Management Representative

Lack of fulfillment of conditions as set out in the Certification Agreement may render this Certificate invalid.
ACCREDITED UNIT: DNV GL Business Assurance B.V., Zwloseweg 1, 2994 LB Barendrecht, The Netherlands, TEL: +31 10 2922 689 - www.dnvba.com

PROJECTS REFERENCES

CONTRACT TITLE
LIVING QUARTER PRESERVATION & GLYCOL HANDLING FACILITY & FUEL GAS SKIDS. (BLASTING & COATING)
FIRE PUMP & FIRE MAIN INSTALLATION & HEARTH STRUCTURE FABRICATION & MISC. WORK
FABRICATION & POLISHING OF S.S. FIDS & SIGN SUPPORTS & MISCELLANEOUS STEEL WORKS FOR DUBAI AIRPORT.
RECTIFICATION OF DUBAI TERMINAL - EGPC PRODUCT LINES, FOAM LINES, LOADING GANTRY, PUMP HOUSE, SHELTERS, FAST FLUSH TANKS.
CONVERSION OF SHARJAH TERMINAL FOR GAS OIL STORAGE & ASSOCIATED MODIFICATIONS.
INSTALLATION OF COVERFLOTE IN TANK 6, 7, 8 & 9 IN SHARJAH TERMINAL.
FILLING STATION STRUCTURAL WORK CANOPY & PIPING.
MISCELLANEOUS CONTRACTS FOR STRUCTURAL STEEL CANOPY + PRODUCT PIPING FOR EGPC/EPPCO.
INSTALLATION OF 14" IMPORT LINE & 10" PRODUCT LINES IN SHARJAH TERMINAL.
SAJAA FIELD PHASE I
FABRICATION AND DELIVERY OF STEEL STRUCTURE
ARMY BASE SWEIHAN
SMELTER CONSTRUCTION WORKS
PRE-FAB HOUSE CONSTRUCTION
PIPE LINE FABRICATION
MISCELLANEOUS FABRICATION

PROJECTS REFERENCES

CONTRACT TITLE
MODIFICATION OF RIG STRUCTURE FOR MOMENTUM II RIG & MISCELLANEOUS PIPE WORKS.
FOR TRIDENT III, & TRIDENT 18-P.D.C.
MISCELLANEOUS STRUCTURAL WORKS FOR DESALINATION PLANT AT DELMA & SILA.
FABRICATION, INSTALLATION OF WALKWAY, CROSSOVER PLATFORM & MISCELLANEOUS STEEL WORKS.
STRUCTURAL STEEL WORKS FOR ROSARY SCHOOL AUDITORIUM, SHARJAH/ PHOENICIA HOTEL ROOF REPAIR
STRUCTURAL STEEL BUILDING AND STRUCTURE FOR ALPINE INDUSTRIES, JAFZ AND EFFAMAX, QUALPRO AT JAFZ
FABRICATION & SUPPLY OF STRUCTURAL
LNG (2002) SHIPBUILDING- DAEWOO STRUCTURAL SUPPLIES WORKS
SUPPLY OF SCAFFOLDING MATERIALS
AL WASIT POWER STATION PH.IV
FLOATING PONTOONS & JETTY STRUCTURE AT AL ARIAM ISLAND, ABU DHABI.
STRUCTURAL & PIPELINE
BLASTING, PAINTING & REFURBISHING EVAPORATOR ROOF 1, 2 & 3 AND BRINE PUMP GANTRY REFURBISHMENT
ADDITIONAL REEFER GANTRIES DUBAI PORTS AUTHORITY
ALWASIT POWER STATION PHASE I TURBINE HALL STRUCTURE, TRANSFORMER, AUXILLARY TRANSFORMER STEEL BUILDINGS SPACE FRAME FOR ELECTRICAL OFFICE BUILDING

PROJECTS REFERENCES

CONTRACT TITLE
AL WASIT POWER STATION PHASE II TURBINE HALL, MAIN TRANSFORMER & AUXILLARY TRANSFORMER STRUCTURE
ISO OCTANE / GASOLINE PRODUCTION FACILITY
AL WASIT POWER STATION – PHASE III TURBINE HALL, MAIN TRANSFORMER, AUXILLARY TRANSFORMER, WORKSHOP & STORES
NOMINATED STEEL SUB CONTRACT FOR STRUCTURAL STEEL WORKS FOR FILLING STATION CANOPIES, C STORES, LUBE EXPRESS, CAR WASH FOR YAR- MOUK, NISSERIA, NAKHEEL BRIDGE & RA-JHAN FILLING STATION FOR EMARAT (EGPC)
LONG-TERM CONTRACT FOR STRUCTURAL STEEL & ROOF PANELS FABRICATION & SUPPLY FOR ACCOUSTIC PACKAGES OF TURBINES IN POWER STATIONS.
FABRICATION, SUPPLY & ERECTION OF STRUCTURAL SHEET WORKS FOR TURBINE HALL BUILDING AND TRANSFORMER HALL, SUPPLY AND ERECTION OF TWIN SKIN CLADDING FOR TURBINE HALL BUILDING/ TRANSFORMER HALL.
EXPANSION OF AJMAN CITY CENTRE
FAB. & SUPPLY OF MOBILE TOWERS
MULTI-DOCKING SYSTEM
NOSE DOCKING SYSTEM
CCPP22 PROJECT AT DUBAL
FABRICATION AND SUPPLY OF RAMPS AND WALKWAYS FOR WIDENING OF AL MAKTOUM BRIDGE WALKWAY BEAM AND PLATE FLOATING BRIDGE

PROJECTS REFERENCES

CONTRACT TITLE
AL SAWAH BRIDGE, ABU DHABI
PEDESTRIAN BRIDGE
LNG SHIP BUILDING – DAEWOO – STRUCTURAL SUPPLIES WORKS
MULTI-TYPE AIRCRAFT DOCKING SYSTEM FOR HANGER-D
FABRICATION AND SUPPLY OF EQUIPMENT PLATFORMS AND LADDER FOR YAEG-1 PROJECT, K.S.A.
FABRICATION AND ERECTION OF OHL LANDING GANTRY AND GIB SUPPORT STRUCTURE
FABRICATION, SUPPLY AND ERCETION OF STRUCTURAL STEEL WORKS FOR HAMRIYAH POWER STATION, SHARJAH- PHASE 1&2
FABRICATION AND SUPPLY OF 2 NOS. RAMP WALKWAY BEAM AND PLATE FLOATING BRIDGE

PROJECT PHOTOS

EXPO 2020 – UAE PAVILLION



DISTRICT COOLING – DUBAI – EMAAR



PROJECT PHOTOS

STRUCTURES FOR REFINERIES



PROJECT PHOTOS

Bridges



PROJECT PHOTOS

Exchange Pit Structure



Fuel Storage



Power Storage





CONTACT US

Tel: +971 6 743 0320
+971 6 526 2200

Fax: +971 6 743 1074

Email: shelton@excel-uae.com
sales@excel-uae.com
enquiry@excel-uae.com

Web: scaffrental@excel-uae.com
www.excel-uae.com

Address: New Industrial Area Ajman Po Box
1196, Ajman - United Arab Emirates

Mobile: +971 50 634 7379